

# Twickenham & Richmond TRIBUNE

## Contents

- TickerTape
- COVID-19
- Gaslighting
- Twickenham Riverside – Residents' Views
- Memorial walk for Reece Newcombe
- Hampton resident completes 50 fundraising challenges
- Kew Village Christmas Market
- Letters
- What a load of rubbish!
- River Crane Sanctuary
- Hampton North Ward News
- Twickers Foodie
- Review
- Winter Travel now Black Friday is behind us
- Traveller's Tales
- WIZ Tales: Syria
- Why are we so damn scared of spiders?!

## Contributors

- Simon Fowler
- Sue Weaver
- Sammi MacQueen
- Poppy Factory
- Councillor Geoffrey Samuel
- Shooting Star Children's Hospices
- Alison Jee
- Mark Aspen
- Richmond Shakespeare Society
- Bruce Lyons
- Doug Goodman
- Deep Patel
- World InfoZone
- Richmond College
- NPL
- Woodland Trust
- Brentford FC
- GB News
- NAO
- WHO
- LBRuT

## Editors

Berkley Driscoll  
Teresa Read



2<sup>nd</sup> December 2022

T&RT

Twickenham Green's Christmas Tree  
Photo by Berkley Driscoll

Discover Twickenham BID  
Please #shoplocal this Christmas

Twickenham businesses working together as Discover Twickenham BID

Please #shoplocal this Christmas

Discover Twickenham

QR code

Cogner & Sons, Twickenham

# TickerTape - News in Brief

## Man charged with murder in Richmond

A man has been charged as officers make a second arrest in the Richmond Bridge murder investigation.

Ross Hamilton, 32 of Wood Lane, Isleworth was charged on Tuesday, 29 November with the murder of Reece Newcombe and common assault.

Police were called at around 04:00hrs on Saturday, 26 November to a fight on Richmond Bridge.

Reece Newcombe, 31, who was from Egham was found at the scene with critical injuries. He died later than morning in hospital.

## Bus strikes

Strike action is planned by Abellio and Metroline drivers over December.

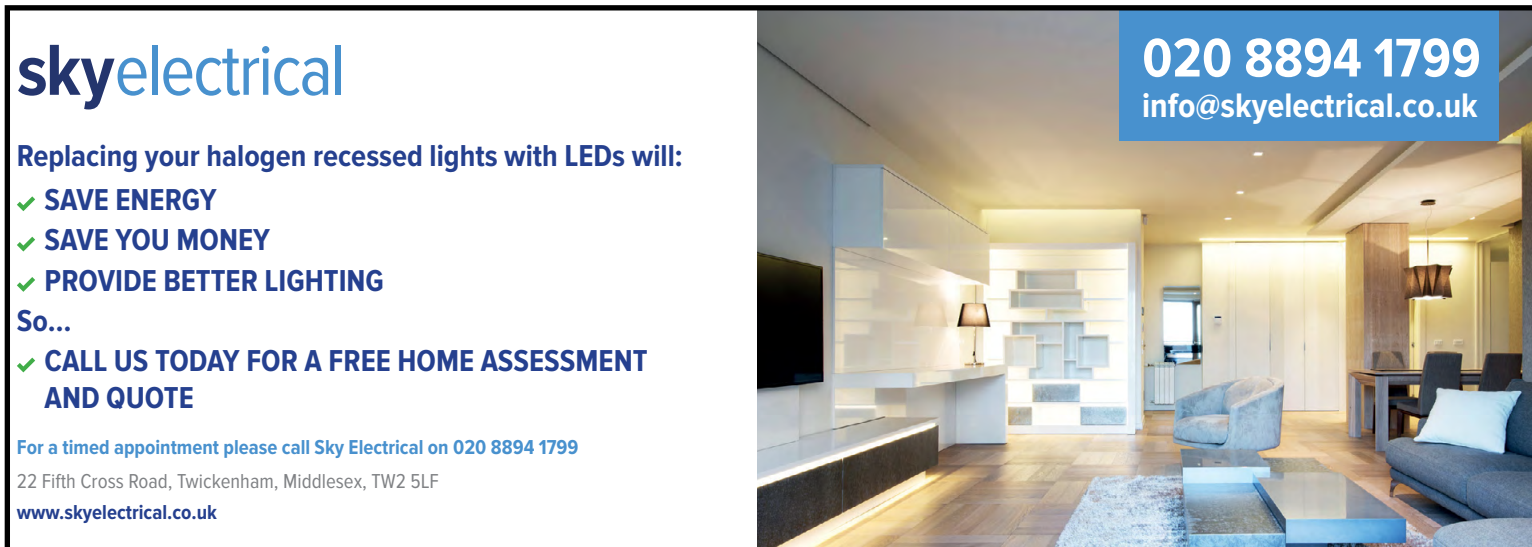
This disruption will occur on the following dates:

- Thursday 1 to Saturday 3 December (Abellio only)
- Thursday 8 December (Abellio only)
- Friday 9 December (Abellio and Metroline)
- Saturday 10 December (Metroline only)
- Thursday 15 December (Abellio only)
- Friday 16 December (Abellio and Metroline)
- Saturday 17 December (Metroline only)

The Metroline strike action from Thursday 1 until Saturday 3 December has been suspended.

Routes affected by the Abellio strike action are mostly in west and south London, while routes affected by the Metroline strike action are mostly in west, northwest and north London.

Visit the [strike page](#) to check if your bus route is affected.



**skyelectrical**

Replacing your halogen recessed lights with LEDs will:

- ✓ SAVE ENERGY
- ✓ SAVE YOU MONEY
- ✓ PROVIDE BETTER LIGHTING

So...

- ✓ CALL US TODAY FOR A FREE HOME ASSESSMENT AND QUOTE

For a timed appointment please call Sky Electrical on 020 8894 1799

22 Fifth Cross Road, Twickenham, Middlesex, TW2 5LF

[www.skyelectrical.co.uk](http://www.skyelectrical.co.uk)

**020 8894 1799**  
[info@skyelectrical.co.uk](mailto:info@skyelectrical.co.uk)

# COVID-19

Teresa Read

## World Health Organization

Weekly epidemiological update on COVID-19, Data 27 November 2022

At the regional level, the number of newly reported weekly cases decreased across four of the six WHO regions: the African Region (-18%), the Eastern Mediterranean Region (-17%), the European Region (-14%), and the South-East Asia Region (-8%); while case numbers increased in two WHO regions: the Region of the Americas (+19%) and the Western Pacific Region (+8%).

The number of newly reported weekly deaths decreased across three regions: the African Region (-79%), the European Region (-35%), and the Eastern Mediterranean Region (-20%); while death numbers increased in three WHO regions: the Region of the Americas (+21%), the Western Pacific Region (+9%), and the South-East Asia Region (+5%).

At the country level, the highest numbers of new weekly cases were reported from Japan (698,772 new cases; +18%), the Republic of Korea (378,751 new cases; +4%), the United States of America (296,882 new cases; +8%), France (230,871 new cases; -1%), and Italy (161,454 new cases; -27%).

The highest numbers of new weekly deaths were reported from the United States of America (2,611 new deaths; +16%), Japan (1,000 new deaths; +42%), Brazil (535 new deaths; +113%), Italy (419 new deaths; -22%), and China (395 new deaths; -17%).

## European Region

The European Region reported just under 772,000 new cases, a 14% decrease as compared to the previous week. Eight (13%) of the 61 countries for which data are available reported increases in new cases of 20% or greater, with the highest proportional increases observed in Kosovo[1] (11 vs one new cases; +1000%), Uzbekistan (692 vs 428 new cases; +62%), and Kyrgyzstan (28 vs 19 new cases; +47%). The highest numbers of new cases were reported from France (230,871 new cases; 355 new cases per 100,000; -1%), Italy (161,454 new cases; 270.7 new cases per 100 000; -27%), and Germany (151,867 new cases; 182.6 new cases per 100,000; -10%).

The number of new weekly deaths in the region decreased by 35% as compared to the previous week, with 2,254 new deaths reported. The highest numbers of new deaths were reported from Italy (419 new deaths; <1 new death per 100,000; -22%), France (387 new deaths; <1 new death per 100,000; -25%), and the Russian Federation (386 new deaths; <1 new death per 100,000; -10%).

## IN THE NEWS THIS WEEK

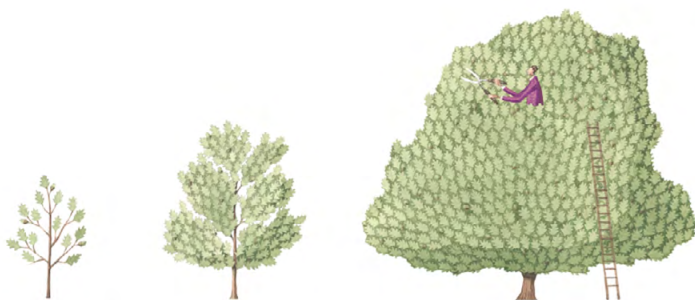
**Sky News:** COVID can live on certain groceries 'for several days' "The public may be interested in the finding that virus may persist in an infectious state, on foods and food packaging surfaces, for several days under certain common conditions."

**The Telegraph:** Life-threatening Strep A infections four times more common than before Covid - The bacteria has killed five primary school age children in Britain in the last month.

**Aljazeera:** US children's hospitals overwhelmed by RSV cases - Nurses have no 'wiggle room' in ICUs amid a surge of respiratory illnesses.

**Mail Online:** Anti-vaxxer nurse who injected up to 8,600 elderly patients with saltwater instead of Covid vaccine walks FREE from court in Germany.

**New York Times:** China Protests Break Out as Covid Cases Surge and Lockdowns Persist.



The Tree Agency

darryl parkin

The Treehouse  
25 King Edwards Grove  
Teddington, Middlesex TW11 9LY  
Telephone 020 8274 0107  
Mobile 07960 123580  
Fax 020 8274 0119  
info@thetreeagency.co.uk  
www.thetreeagency.co.uk



The Tree Agency

# Gaslighting

By Simon Fowler

The American dictionary publisher Merriam-Webster's word of 2022 is 'Gaslighting', that is being the psychological manipulation of a person, usually over an extended period of time, that 'causes the victim to question the validity of their own thoughts, perception of reality, or memories and typically leads to confusion, loss of confidence and self-esteem, uncertainty of one's emotional or mental stability, and a dependency on the perpetrator.'

Gaslighting is frequently used by abusers in relationships – and by politicians and other newsmakers. There's also "medical gaslighting", when a healthcare professional dismisses a patient's symptoms or illness as being "all in your head". The term gaslighting was later used by mental health practitioners to clinically describe a form of prolonged coercive control in abusive relationships.

Despite its recent prominence, the word actually derives from the play 'Gas Light' by Patrick Hamilton, which had its first performances at Richmond Theatre.

The play was set in fog-bound London in 1880, at the upper middle-class home of Jack Manningham and his wife Bella, which like all homes of the period was lit by gas. Bella is driven mad by suggestive psychological messages indicated by the brightness of the gas lights.

The play opened on 5 December 1938. Two weeks later the show was disrupted by a massive electricity outage which disrupted power supplies over most of south west London.

The *Richmond Herald* reported that the audience 'of 500 people were told by the manager that no play would be possible. They took it with scarcely a murmur.'

The play received good reviews when it transferred to the Apollo in the West End. Herbert Farjeon, writing in *The Bystander*, described how the light came on and went off again, reflecting the psychological pressures being put on the victim - Mrs Manningham: 'An excellent device, even if the effect of lighting one extra jet is so gloomy making that two, it seems, would plunge the whole house into complete darkness.'

Mrs Manningham was played by Gwen Ffrangfon-Davies: 'no actress can suffer more subtly, more poignantly, more truly. There is an unforgettable moment when, driven almost out of her mind and challenged furiously by her husband to repeat a question he has just asked her, she struggles simultaneously for thoughts to express and words to express them.'

The play led to two film adaptations in the 1940s. The best known is George Cukor's *Gaslight* in 1944, starred Ingrid Bergman as Paula Alquist and Charles Boyer as Gregory Anton, also known as *The Murder in Thornton Square* in the UK. The two marry after a whirlwind romance and Gregory turns out to be a champion gaslighter. Among other instances, he insists her complaints over the constant dimming of their London townhouse's gaslights is a figment of her troubled mind.

Thanks to Robert Smith



1. Mr. Manningham (Dennis Arundell), Mrs. Manningham (Gwen Ffrangfon-Davies), and Nancy (Elizabeth Inglis).  
Mr. Manningham: "... and you might as well **ligh** the **gas** Nancy. This darkness in the afternoon is getting beyond endurance."

# Twickenham Riverside – Residents’ Views

This week the Tribune received an email from a resident concerned about a publication she said was in support of the Council’s Twickenham Riverside development. The question was asked:

*“Why is there an imaginary artists impression on a bright sunny day of this “paradise” - contrasted to miserable wet winter photographs taken from dismal locations?”*

Previously, the Tribune has been sent copies of emails to residents from campaigns@trlibdems.org.uk “A Riverside Transformed, A Town Centre Revived”. There were various photographs, two were of the “transformation” with two of the Council owned derelict car park – representing the present Riverside. Of course, this area does not have the most desirable view and is designated for the “affordable housing”. However, there were no photographs showing Diamond Jubilee



Gardens, the children’s playground, the refurbished Embankment and all the trees.

And the “forty years of neglect” mantra on leaflets and in emails?

From 2010 to 2018 Twickenham Riverside was a hive of activity; the annual Charlie Shore Boys and Girls Regattas, Dragon Boat Races, music on the Riverside, fairgrounds, Shetland Pony rides and markets.

And do councillors remember the children’s playground opening in 2005, followed by Diamond Jubilee Gardens in 2013 - and the refurbishment of the Embankment?

“40 years of neglect” takes us back to the early 1980s and the Liberal Democrats have been the majority in the Council for five terms of office during that time plus their 1986 alliance with the SDP.

It is true that there were times before 2005 when not much happened on Twickenham Riverside – the reason is that many residents have done their best to preserve Twickenham Riverside for future generations and stop the bulldozers and the property developers; it would be a shame to their memory to let them in.



<https://worldinfozone.com/features.php?section=SavingTwickenhamRiverside>

# Memorial walk for Reece Newcombe this Sunday

The family and friends of Reece Newcombe will be holding a memorial walk on Sunday 4 December, after he was tragically killed last Saturday.

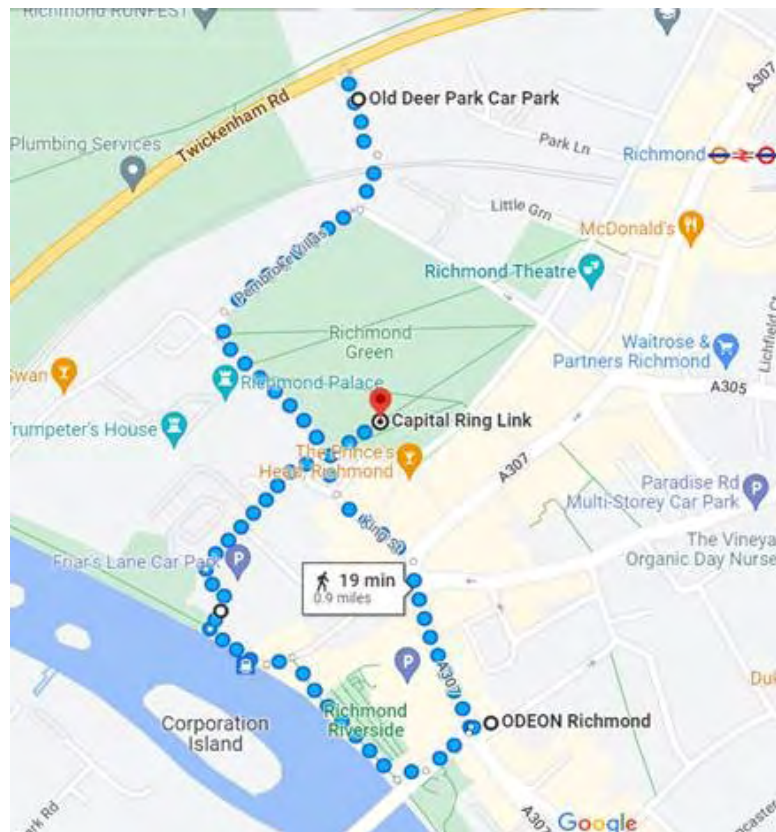
Mr Newcombe's family want the walk to be respectful and to cause as little disruption as possible.

The walk will begin at Old Deer Car Park at 12 noon and will proceed around Richmond Green to Friars Lane along Richmond riverside and then up to Richmond Bridge. Small groups will go to the memorial at Ormond Road to pay their respects.

Crowds are expected to gather from 10am and will have dispersed by 4pm.

Richmond town centre will be busier than usual and there may be minor travel disruption in the immediate area.

Police officers and Council officials will be in attendance during the event, with police officers at road crossings to escort people visiting the memorial.



For any updates during the day, please follow [@lbrut](#) and [@MPSRichmond](#) on Twitter.



# Kew Village Christmas Market

## KEW VILLAGE MARKET



O, come all ye to the Kew Village Christmas Market and ding-dong merrily joining in our flash-mob carol singing.

There'll be song sheets for all the favourites and yes, Santa hats will be worn...

Gifts galore to buy from more than 50 stalls of beautiful handmade crafts and the finest foodie treats plus KVM Christmas cards with all proceeds to local charities.

Speaking of which, Santa Claus, in person, will be presenting nearly £5000 to local good causes.

Party spirit comes courtesy of mulled wine from The Rotary Club of Kew and big-band seasonal showtunes from the evergreen St Margaret's Elastic Band.

Merry Christmas and happy new year – till Sunday 5th February (the market puts its feet up in January).

<https://kewvillagemarket.org>

## KEW VILLAGE MARKET



O, come all ye - and join in singing with the Kew Village Christmas Market

# FLASH MOB CAROLS

Sunday 4th December 12.30-2.00

All the favourites - song sheets provided

Outside Kew Gardens Station

Dear Tribune,

## The Safest Borough in London?

My letter in last week's Tribune expressed my concerns that Richmond constantly promulgates itself as the safest borough in London, a statement which, in itself, does not actually make it safe and can only lead to complacency.

Sadly, my concerns were confirmed last Saturday by yet another fatal stabbing, this time near Richmond Bridge. That followed the previous Thursday's stabbing in Twickenham.

Incredibly, a resident was reported as saying: 'It is a very safe area of London and this doesn't change that.'

Well, I think it does because earlier this year there was a serious assault in Richmond and fatal stabbings in Mortlake and Kingston. Not very safe for them, was it?

Or for us, either, as we all go to these areas for work or shopping. We can't even safely walk our streets now because of all the e-scooters and bikes on the footways. Police on the streets could put a stop to that just as they do in Monaco and other countries which care about their citizens.

I was once stopped by a police constable for riding my bicycle at night without its front light. I explained that it had been stolen only an hour before and I was riding home so he was very understanding about it. But it is an example of how a police officer on the street can keep an eye on things and advise people when their behaviour is not what it should be.

But when the cat's away...

Of course, there will always be crime and many reasons for it and we do not want a Gestapo-like presence on our streets but the lack of visible police means that the people who have a total lack of respect for others can do whatever they want, such as reaching for a knife when they lose control of themselves. Other local boroughs are also reporting rising knife crime.

I spend a large part of my life in Japan where I have never, ever, felt in danger.

However, I do not feel like that in this country. Unlike Japan, here it's everyone's right to behave as badly as they want to – so anything goes. There are now so many stabbings here that is hard to keep track of them.

How sad that Richmond, a lovely part of London when I first moved here, is now blighted by the national sickness of aggression and violence.

On 31 January 2002, Judge Roger Davis said: "*All over London people are violent, attacking other people just as they did in the 18th century*".

Never mind, we live in the 'Safest Borough in London' !

Michael Jay  
Hampton



# Hampton resident completes 50 fundraising challenges

What do marshmallows, a glider and a guitar have in common? They have all featured in a list of 50 fundraising challenges completed by Hampton resident Shelle Luscombe, which have raised over £11,000 cumulatively.

Following her 50th birthday, Shelle was set 50 challenges by friends, family and strangers in exchange for a donation to her JustGiving page.

Over the course of 500 days, Shelle has raised more than £11,000 for Alzheimer's Research UK, the UK's leading dementia

research charity. The challenges included learning how to play the guitar, running a 5km race and skydiving from 15,000ft.

Shelle's fundraising caught the attention of JustGiving, and she was selected as one of three finalists in the Creative Fundraiser of the Year category of the company's 2022 Awards.

Shelle was also shortlisted as a fundraising trailblazer in the inaugural Alzheimer's Research UK Supporter Awards.

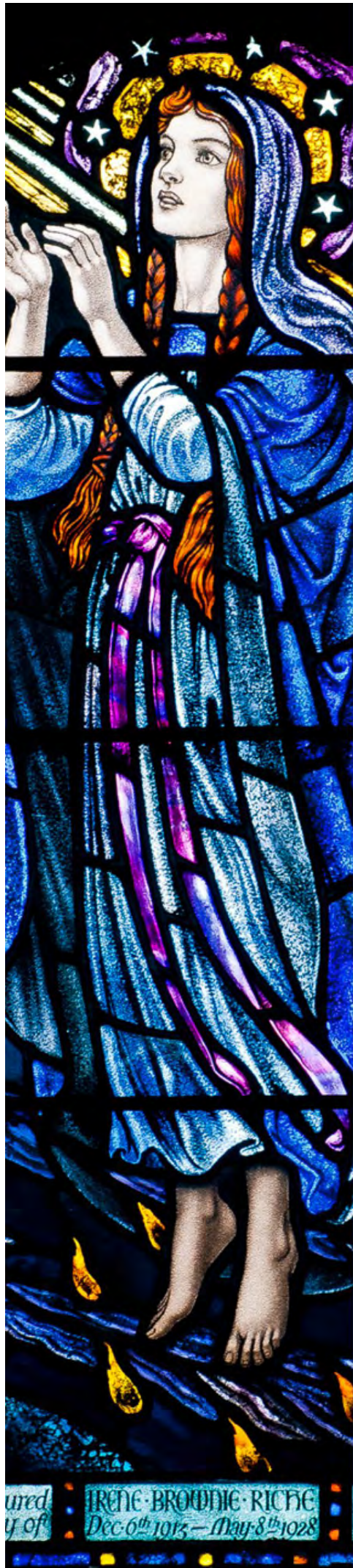
Read more about [Shelle's fundraising challenges](#).

If you would like to donate, visit Shelle's [JustGiving page](#).

Want to have a say in developing Richmond's 10-year Dementia Health and Care Strategy to best support people in the borough living with dementia and their carers?

Take part in our [online survey](#), open until 21 December 2022.





West London Chamber Choir  
with  
Archdeacon Cambridge's  
Church of England Primary School  
Junior Choir

*I Sing of a Maiden*  
*Carols and seasonal choral music*

**Sunday 4 December 2022 | 7.30pm**  
Holy Trinity Church  
Twickenham Green, TW2 5TS

Tickets £13 (+bkg fee)  
from Eventbrite or  
£15 on the door  
U16 free

[www.westlondonchamberchoir.com](http://www.westlondonchamberchoir.com)

# Your local businesses need you in the countdown to Christmas

As we near Small Business Saturday (3 December) and the festive period, we're encouraging residents of Richmond upon Thames to shop local with our amazing small independent businesses, who really need support in the lead up to Christmas.

To encourage everyone to support their local business community, Richmond Council is continuing the #RichmondShopsLocal campaign. Take a [virtual tour of your local high street](#) to see what's on offer to you and filter through independent shops by ward on [Visit Richmond](#) for shopping highlights in all of the town centres. Keep an eye on the Council's social media channels for more ideas and subscribe to our [Richmond Card newsletter](#) for local deals and information about your amazing local businesses throughout the year.

CLlr Phil Giesler, Business and Growth Lead Member, said:

"We know that people will be carefully considering how and where they spend their money this season. By shopping locally, you are not only playing a key role in helping to maintain a strong jobs market for our local communities, but also helping our business owners to survive the difficult times.

In Richmond upon Thames, we are fortunate to have a diverse and unique offering of local independent shops on our doorstep. These businesses and the amazing contribution of the people who run them help to give each area of our borough a sense of place and community, with its own strong identity.

There are some incredible stories and people behind our borough's local businesses, who help to create a personalised and enjoyable shopping experience for everyone who walks through their doors.

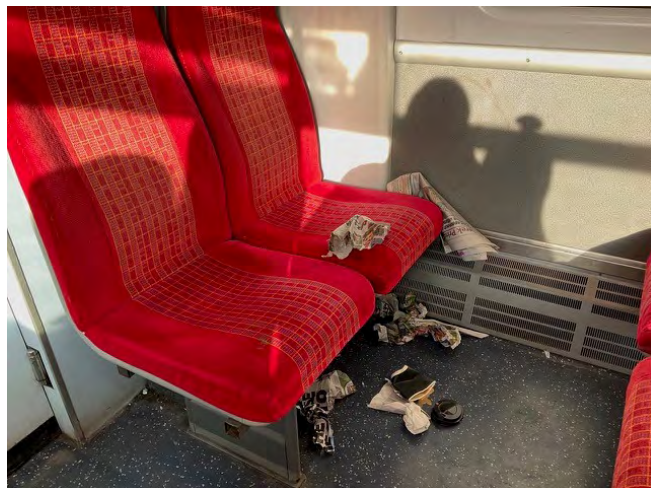
When you buy from business owners you trust, you know that you're going away with quality, often one-of-a-kind products and services. Spending money locally and spending time getting to know your local businesses will ensure we maintain the strong communities characteristic of Richmond upon Thames and remain resilient as a borough during on-going uncertainties."



# What a load of rubbish!

By Sue Weaver

Lessons could be learnt from the cleanliness of the public in Japan. Before you board the Shinkansen (Bullet Train), an army of uniformed cleaners line up at the doors, each one holding out a rubbish bag for the obedient departing passengers for their rubbish and stepping in after instructed like soldiers to conduct what is known as the '7-Minute Miracle' - completely cleaning and prepping in just seven minutes. There is rarely loose rubbish, just carefully wrapped used Bento boxes from the designated place. All timed perfectly. Having finished, they bow to the train and its passengers - and off they go. Their method is so inspiring that even Harvard Business School students study it.



*Seen on the 11:24 SW Railway from Mortlake to Waterloo on Wednesday 30 Nov.  
Not the only place commuters were unable to sit on this busy train.*

*"In Japan, cleaning is more than a job, it's part of the culture, like an art. Anyone who has been to Tokyo knows it's one of the cleanest cities in the world and it keeps it that way, it takes a team of dedicated professionals who are often un-noticed, meaning they are doing an excellent job" (look at the 'art of toilet cleaning' near the end of this video). <https://www.youtube.com/watch?v=BM2I1OrGAvM>*

So - why can't some enterprising person send TFL Management and a team of cleaners to learn the proper way to do things? See it - See it again - and Sort it? - No chance.

<https://medium.com/ignition-int/the-7-minute-cleaning-miracle-9d2b5ef4f9e5>

<https://japantoday.com/category/features/lifestyle/shinkansen-cleaning-crew-have-just-7- minutes-to-get-train-ready>



Even those who have never been to Japan have now seen the post-game ritual that is being met with widespread astonishment at this year's World Cup in Qatar where Japanese supporters meticulously cleaned the stands, picking up everyone's rubbish. It hardly mattered what it was - or even whose it was - the fans went across the aisles shuffling the litter in to bags before handing them to clearly delighted stadium workers on the way out.

***"It's a sign of respect for a place," said Eiji Hattori, 32, a fan from Tokyo, who had a bag of bottles, ticket stubs and other stadium detritus. "This place is not ours, so we should clean up if we use it. And even if it is not our garbage, it's still dirty, so we should clean it up."***

No doubt that here, as always, 'Lessons will be learnt'?

What a load of rubbish!



## Winter Solstice 2012 Photo

*“To go in the dark with a light is to know the light.*

*To know the dark, go dark*

*Go without sight,*

*and find that the dark, too,*

*blooms and sings,*

*and is travelled by dark feet and dark wings.”*

[Bushy Park Santa Fun Run](#) Sunday 4th /11th December for Princess Alice Hospice. We have donated to the Hospice for many years and treasure memories of our Father’s last days there surrounded by love and care when we could not cope anymore at home. If only this end-of-life service was available to all. More details on the link above for the annual Santa Run which you can support by cheering on the participants even if you cannot join in this year. Donations can be made direct via their website. See you there!



## Left is a Photo of the Kindness Bench

by the River Crane which is a short walk to the Kneller Gardens café where we had a scrumptious snack. We enjoyed the home-made cakes and the lovely staff welcome. They offer an ‘over 65’ lunch deal in the warm with great views and your support for this local community initiative is appreciated.

*All ages are catered for here!*



[National Tree week](#) ends 4th December and we have been watching our “Christmas Tree” growing in the garden for some years now! Take a look at the link to the Tree Council for more information on their work and how to get involved in this important area of conservation.

Website: [River Crane Sanctuary](#) [Instagram](#)

# Find out more about a career as a Police Constable

## Event: Pop Up Recruitment & Community Engagement Event

**DATE:**

3rd - 4th December

**TIME:**

12pm - 4pm

**ADDRESS:**

O/S Twickenham Railway  
Station,, London Road,  
Twickenham, Greater  
London, TW1 1BD

**For more information on Outreach events, visit [www.met.police.uk/newpcs](http://www.met.police.uk/newpcs) or scan the QR code above**



**METROPOLITAN  
POLICE**



# Join The Poppy Factory's 100th Christmas for feelgood festivities

Festive workshops, live music and discovery sessions will bring joy to The Poppy Factory's visitor centre this December as the charity celebrates its 100th Christmas.

Visitors can take part in a wreath-making masterclass, join a Christmas cupcake workshop and listen to a special performance by Blackwater Valley Wind Quintet, while also supporting the ex-forces community.

Small groups and individual visitors can also book to join one of three hosted discovery sessions and enjoy a festive factory tea break, with hot chocolate and seasonal favourites like mince pies, chocolate log, Christmas cake, ginger cake and fruit loaf.

Ticket holders will have the chance to discover the heart-warming story of The Poppy Factory community through the interactive exhibition, including restored archive photographs of Christmas parties for the children of the first injured veterans who lived and worked there from 1922 onwards.

Funds raised through the visitor centre will go towards employment support for the armed forces community, helping veterans with health conditions to transform their lives.



Amanda Shepard, Director of Fundraising and Communications, said:

“We're pleased to offer such a wide-ranging Christmas programme in the new visitor centre in The Poppy Factory's centenary year. I'd encourage everyone to get involved – you'll have a great time while also making a valuable contribution towards our year-round support for veterans with health conditions, across England and Wales.”

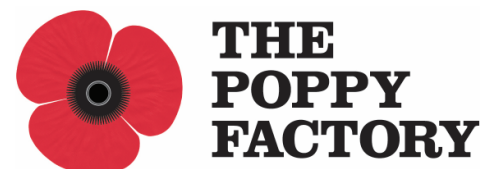
Find out [more information about the events and book tickets](#).

Festive events at The Poppy Factory:

- Christmas wreath-making workshop with Lilac & Bloom - Thursday 8 December at 12.30pm
- Christmas cupcake workshop with 7 Marvels - Monday 12 December at 12.30pm
- Blackwater Valley Wind Quintet Christmas concert - Friday 16 December at 12.30pm

Hosted discovery sessions:

- Monday 5 December at 12.30pm
- Tuesday 6 December at 10.30am
- Monday 19 December at 12:30pm



# Richmond Repair Café to host drop-in workshop

Join the Richmond Repair Café for a drop-in workshop learning how to mend your clothes.

On Thursday 15 December from 4.30 to 7.30pm, the Richmond Repair Café will be hosting a free community event where participants will learn how to mend damaged clothes.



The workshop encourages you to bring along one or two items of clothing that are in need of repair and you will be taught how to mend them.

The workshop will include examples of clothes that have been repaired, as well as materials to practice.

All workshops are suitable for those with no previous skills and the necessary materials are provided.

The workshop will be held in the Marwood Room at the Kew Community Trust, St Luke's, The Avenue, Richmond, TW9 2AJ.

This event is presented by [TRAID](#) in partnership with the London Borough of Richmond Upon Thames and [West London Waste Authority](#).

# Whitton Adult Community Singing Christmas Open Session

Come along between 11.30am and 12.30pm on Saturday 10 December to hear a variety of Christmas songs across all genres! You are welcome to join in and sing, or just to listen to the music.

Music will be varied - pop to rock'n'roll to classical songs and even folk carols. This free event includes free light, seasonal refreshments.

The Christmas Open Session will be held in Lambeth Hall, Whitton Community Centre, Percy Road, TW2 6JL.



For further enquiries, please contact Loulla Gorman:  
Email: [loulla82gorman@gmail.com](mailto:loulla82gorman@gmail.com) / Phone: 07788664957



# Hampton North Ward News

Councillor Geoffrey Samuel

I send my very best wishes for Christmas to all our residents. A short January 2023 edition will be circulated between Christmas and New Year.

## LIME BICYCLES

Residents have reported – and I have seen – these bicycles obstructing the pavements to an extent that is a problem for the elderly and disabled and actually pushes those with prams on to the highway. This is in contrast with Council policy which controls and limits the ability of shops and street traders to use the pavements. It appears that last September the Transport Committee agreed to their provision by Uber and provided ‘designated spaces’ for the bicycles. Have you seen any? The Contract provides that these lime vehicles should not obstruct the pavement but I have not seen any action by the Council when this is ignored. The scheme has many advantages provided that ‘no obstruction’ is properly enforced. Please tell me of your experiences with Lime bicycles.

## THE WHITE HOUSE

The long-awaited report was presented to Finance committee in November. I expressed disappointment that it merely proposed further discussions whereas residents had expected plans for the full provision of courses, classes and activities as well as a café that is open when residents want it. At the moment all that is available is the café for five hours on three days a week and some limited activities.

## REFUSE AND RECYCLING

Following further complaints from residents I have discussed all the issues with the Interim Head of Waste, who will be replaced by a permanent appointment early in 2023. He is now fully aware of the situation and the unacceptable state of the recycling centre: I stressed that, if CCTV cannot be provided, it should be moved. I will continue to pass to him all your complaints

## I SUPPORT THESE ORGANISATIONS

I am delighted that after the initial meeting which I attended a proper **FRIENDS OF NURSERY GREEN** has been set up. This small park just off **The Avenue** is so called after the nurseries which used to cover the site. The Friends have a mission to help, conserve and enhance Nursey Green and its environs. If you would like to join please contact [friendsatnurserygreen@gmail.com](mailto:friendsatnurserygreen@gmail.com) or follow them on <https://www.facebook.com/friendsofnurserygreen>.

The **Shooting Star Children’s Hospice** just off Hampton Square is holding its first Christmas tree collection to help raise vital funds. In return for a donation your real Christmas Tree will be taken away between 7<sup>th</sup> and 9<sup>th</sup> January and recycled. No waste, no tree sitting in front of your house ! Register at <https://www.shootingstar.org.uk>

## HOUSING ASSOCIATIONS

I keep in regular touch with our two largest Associations, RHP and PA. With RHP I have been acting for residents in **Fairlight and Stevens Close**. A resident with two very young children in **Stanborough Close** was without hot water and heating for too many days which required intervention. There have been problems with one staircase in **Fulmer Close** where I felt that PA initially did not act with sufficient urgency.

## SHORTER ITEMS

- All that the Council can offer on fireworks is a Friday and Saturday Noise service from 10pm to 3am on 09744 038495
- A non-working street light in **Acacia Road** was reported in late August but still not working at the end of November. I have, however, arranged for work to begin.
- Many residents have written to me about the Mayor of London's intention to extend ULEZ to the whole Borough which I oppose at this time. It now looks as though he will go ahead with this next August
- I congratulate the Art Group on their exhibition and All Saints Church on their Christmas Fair. I enjoyed both of these events
- Following the decision of the Council to rehouse a local resident in East London I have now forwarded to the Council a Court of Appeal decision on how such cases should be handled
- I am supporting residents in **Broad Lane**, who are opposing an over-development of a site in the road.
- I hope that my planned meeting with **Abellio** will go ahead in December although they have announced many days of strike action
- Many residents report that the area looks 'run down' For example one resident writes of **Hampton Square** "rose beds untended fencing needs attention, trees are unpruned and paving slabs are starting to sink". I follow up every complaint!
- The Council has published its "Leafing Action plan" but there are still too many instances of flooding due to uncleaned gullies and drains blocked with leaves.

*Unless you tell me to the contrary I may forward any of your comments/complaints to the relevant councillors and Council officers.*

*Keep in touch with me by phone or [gjshn@btinternet.com](mailto:gjshn@btinternet.com): tell me of issues which concern you: I am here to help. The e-mail address is the best form of communication: I check the Council e-mail address less frequently and, with rare exceptions!, do not access social media.*

# MUSIC AT ST MARY MAGDALENE

Paradise Road, Richmond TW9 1SN

More info: [www.richmondteamministry.org](http://www.richmondteamministry.org)



*Saturday 3 December, 2.00pm*

## HONOURABLE ARTILLERY COMPANY BAND

*Christmas Music and Carols*



*Free entry*

# **RIGHT SAID FRED**

**GBN**  
BRITAIN'S NEWS CHANNEL

**Will be appearing on the Mark  
Dolan Show on GB News on  
Saturday the 3rd December at  
8pm**

# Survey on London Ambulance Service in Richmond

The London Ambulance Service (LAS) have asked Healthwatch Richmond for advice on how they can improve the care that they provide for Londoners.

As well as the emergency ambulance service, LAS also provides some 999 and NHS 111 support.

They want to know why people make decisions to access care and how the different parts of the health and care system can ensure patients get the right care in the right place, at the right time.



Share your views by calling Healthwatch on 0208 099 5335 or by [completing the survey online](#) - it will help to shape the future of the London Ambulance Service.

## NHS winter funding available for local organisations and groups

Are you running an event or activity supporting people to stay healthy this winter? If so, funding is available to support you.

The NHS is offering funding to local organisations and groups to run an activity or event, which supports their community to stay healthy and well.

A maximum of £500 is available per organisation which could help cover some of the costs, enable you to increase the size of an event, or offer refreshments or activities to encourage people to come. The closing date for applications is midday on 12 December 2022.

Find out how to [apply for funding](#).

A poster from NHS South West London. The text on the poster reads: 'Support your local community to stay healthy and well this Winter and signpost to local NHS services.' Below the text is an illustration of five diverse people sitting in a circle on chairs, talking. At the bottom of the poster, it says 'A maximum of £500 is available.' The NHS logo and 'South West London' are in the top right corner.

# Shooting Star Children's Hospices launch Christmas tree collection

Shooting Star Children's Hospices is thrilled to announce their first ever Christmas tree collection and recycling service. In return for a small donation, which will go towards supporting babies, children and young people with life-limiting conditions, and their families, Shooting Star Children's Hospices will collect your real Christmas tree, take it away and recycle it for you.

Running in partnership with JustHelping, a UK charity who aim to empower communities to raise money for local causes, Shooting Star Children's Hospices will receive 90% of money raised, with the other 10% distributed to other local charities.



What's more, as well as supporting local families, your trees will be recycled into environmentally friendly compost by our partner Merrist Wood College for the Guilford-based collection. For the **Hampton-based collection**, trees will be chipped sustainably by our other partners The Tree Agency, and Mortlake Crematorium.

Operating within a radius of the charity's two hospices, their tree-mendous collecting volunteer elves will cover a wide number of GU and TW postcodes between **Saturday 7 – Monday 9 January 2023**. All you need to do is sign up and register your tree before **Tuesday 3 January**.



**Corporate Relationship Manager, Rumour Giles said, "Our Christmas tree collection means no hassle, no waste, no tree sitting in the front of your house post-Christmas, or pesky pine needles in your car. What's more by signing up you will be helping raise vital funds for the 700 families we support across Surrey and west London."**

To register your tree visit [www.shootingstar.org.uk/event/recycle-your-christmas-tree/](http://www.shootingstar.org.uk/event/recycle-your-christmas-tree/) and help make every moment count for local families this Christmas.



**Shooting Star Children's Hospices**

# Hampton Choral Society



## ***Brahms German Requiem***

## ***Strauss Four Last Songs***

**Saturday 3rd December 2022 at 7.30pm  
St Mary's University Chapel, Strawberry  
Hill, Twickenham TWI 4SX**

**With professional orchestra and soloists  
Christine Cunnold  
Stephen Gadd**

**Richard Harker Musical Director**

**Tickets: £15 adults; £7 - under 16's**

**Box office - 0208 941 5394**

**AT THE DOOR - CONTACTLESS/CARD/CHEQUE/CASH**

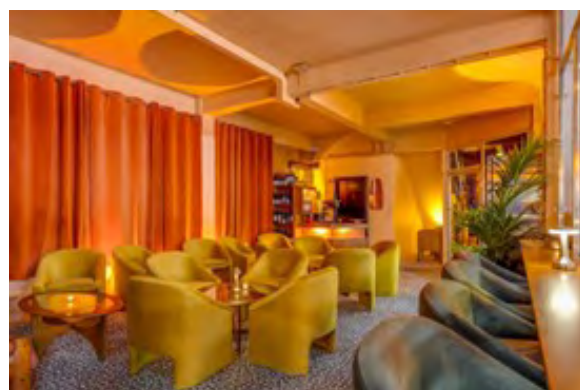
**Charity Number 261788**

## PLONKERS BAR - A FUN NIGHT OUT AT DUKE OF LONDON

At the end of a side road to the river, off Brentford High Street, based in Ballymore's The Brentford Project, is a truly bizarre world that, until recently, was completely unknown to us. **Duke of London** is a classic car showroom, but a showroom with a difference...and what a difference! As well as an eclectic collection of classic cars (including some very rare ones and what I thought a rather vulgar, metallic purple Rolls Royce) It also houses a pizzeria, a bacon butty stall, a wine bar, and much more. But it's the wine bar I want to tell you about: it's called **Plonkers Bar** and it nestles in a corner of the car showroom. It's only open a couple of days a week (Friday 17.00-23.00 and Saturday 13.00-23.00) but it also hosts a series of top-notch wine tastings, taking place on a Thursday evening. And it was to one of these that we went the other day - Thanksgiving in fact, so it was particularly appropriate that we were scheduled to taste a series of American wines.



The interior of the bar is very stylish and reminiscent of a stylish '50's/early 60's lounge, (with design inspiration from Mad Men), featuring leopard print carpet, luxurious velour armchairs and collectable vintage pieces and art. When we arrived, **Csaba Toth**, the wine consultant who runs the bar in conjunction with Duke of London owner **Merlin McCormack**, and sommelier Christine, was busy arranging the cocktail tables and setting up with glasses, water, notes and a carefully curated selection of nibbles to enjoy with the wines.



The person conducting the tasting was **Luisa Salussolia**, founder of **Unicorn & The Vine**, a local wine educator, and Wine & Spirit Education Trust (WSET) programme provider. I completed my WSET exams some years ago, and I found Luisa's style of presentation excellent, very relaxed and informative. I would have loved her to have been my tutor.



Having introduced herself, and explained the best way to appraise and taste the wines, Luisa introduced the first wine - a delicious sparkling from Dundee Hills, Oregon. She talked us through the history of US wine production and I wasn't surprised to learn that 80 % of US wine is produced in California. When we've visited various wineries in California we found many of the reds rather too tannic for our palates. But Luisa and Csaba had put together a superb list of whites and reds from New York, Washington, Oregon and of course California. I have to be honest, they completely changed my view of Californian reds, while also introducing us to some previously completely untried regions. The whole evening was very relaxed and interactive, and afterwards we finished the remnants of the tasting wines, ordered extra supplies and chatted to Luisa, Csaba and our table companions.

I thoroughly recommend the Plonkers wine tastings. The wines you taste are all exceptional quality and the price for a relaxed, sociable, educational evening is really good value. (around £40-45 per person) We're planning to return on a Friday or Saturday for a pizza upstairs in the showroom and to see the bar in full swing. Having been following it for some time on Instagram (@plonkersbar) it certainly seems to be a thriving, fun place with live music with a real buzz!





GIBRALTAR

**sunborn**

5 - STAR YACHT HOTEL

CASINO RESORT



# SUPERYACHT GLAMOUR

ON NEW YEAR'S EVE



## PACKAGE INCLUDES:

WELCOME AMENITIES | DAILY BREAKFAST BUFFET  
1 X INFINITY SPA VOUCHER (£50)  
2 X DETOX, 2 X HYDRA EARTH KISS ORGANIC FACE MASKS  
NEW YEAR'S EVE PARTY PACKAGE FOR 2 (LOCATION NEEDS TO BE PRE BOOKED)  
BUBBLY BREAKFAST BUFFET 1<sup>ST</sup> OF JANUARY

**Book 30<sup>th</sup> December to 2<sup>nd</sup> January, 3 nights £770**

For 2 guests in a Super Yacht Superior Room

**Book 31<sup>st</sup> December to 1<sup>st</sup> January, 1 night £450**

For 2 guests in a Super Yacht Superior Room

Terms & Conditions: Offer subject to availability

Package is subject to availability. Cannot be combined with other bookings. Reservations must be made direct via phone or email and cannot be made via third parties. Pre-payment is required and bookings cannot be cancelled or modified

TO BOOK CONTACT: +350 200 16900 | RESERVATIONS@SUNBORNGIBRALTAR.COM



## Glass Human

by Samantha Fernando, libretto by Melanie Wilson

Glyndebourne Productions, premiere at Glyndebourne and on tour until 5<sup>th</sup> December

Opera in the popular mind tends to be associated with “grand”, everything large scale, extrovert. *Glass Human*, in contrast, in a minimalistic piece, simple set, five musicians, three singers. This is opera as introvert ... its introversion, though, is its strength. It looks at one human emotion, loneliness, and surgically dissects it.



Three lonely beings are Grace, a first-year university student; a middle-aged woman, Oma, a Syrian refugee; and Edward, aging, a widower with early dementia. The space they occupy is an under-lit confining circle that represents the tower block where they live, isolated, fearful of what lies outside ... and of what lies inside their minds. We are looking not so much at these three individuals, as looking into them.



The dialogue is natural, raw and abrasive. Grace’s directness is stuff to make the proverbial maiden aunt’s hair curl. Also librettist Melanie Wilson has embedded in the background the real-life voices of people in the cities to which *Glass Human* has been touring.

Director Lucy Bailey creates an atmosphere that accentuates the tension, as the opening low-pitch chest-echoing rumble could be thunder, for pizzicato harp and viola suggests a rainstorm; or it could be the echo of voices in the tower’s voids ... or in their imaginations.

What is remarkable about *Glass Human* is the music. Samantha Fernando’s score gives a tight group of only five musicians a broad palette and canvas, and under the baton of Ashley Beauchamp, they bring out the most extraordinary range of sounds that are nothing short of acrobatic.



*Glass Human* is gripping and, as a mood piece, it absolutely excels; as a study of loneliness, it is incisive and intimate; as an opera, totally absorbing.

Read Mark Aspen’s review at [www.markaspen.com/2022/10/30/glass-human](http://www.markaspen.com/2022/10/30/glass-human)

Photography by Richard Hubert Smith ©Glyndebourne Productions



# Reboot Festival 2022

Week Three

Barons Court Theatre until 3<sup>rd</sup> December

Watching six plays in one evening is a little like getting a taster menu at a restaurant. You know which dishes you would like more of, which are perfectly portioned and which perhaps you would not have chosen. Happily all of the plays in the final week of the *Reboot Festival* fall into the first two categories. Short and snappy, they keep the audience on their toes!

*Antigone* brings the Greek tragedy intelligently into the present. In Sophocles' original, Antigone fights for a proper burial for her brother. In this version, Antigone is fighting for justice after her brother has been killed in a protest against the established power. This is a compelling play, performed with energy, attack and feeling. Marie Mayangi hits the spot with her direct and honest writing.

*The Watchers* by Jayne Woodhouse is placed very firmly in contemporary Iran and the protests for women's rights there, but it could potentially be anywhere in the world. A chilling reminder of how passive protest can turn dangerous under authoritarian regimes, it is a thought-provoking and unsettling piece of writing, succinctly and subtly making its point.



*Antigone* and *The Watchers* examine overweening state powers. Then a completely different theme emerges: the tables are turned and the person with power actually has nothing at all except a 'label'.

In *Stan* by Leo Bacica a superfan visits her hero backstage, and ends up locking him in the dressing room. The tension is carefully judged, both in the writing and the performance. The end is predictable: in the final analysis, who is going to be believed?

And the tables turn again in *Grace Finds Kel* by Rex McGregor where social worker Grace finally finds homeless Kel, whom she is trying to rehouse. But Kel doesn't want to be rehoused and is happy in his tent foraging for dandelion leaves. Understated and genuine performances raise important questions about society's assumptions.

So what of the taster menu? All six plays left me thinking, but I will remember *Antigone* and *The Watchers* for their incisive and perceptive writing and their well-judged performances. It is impressive how much you can say, or leave unsaid, in a fifteen-minute play.

Read Claire Alexander's review at [www.markaspen.com/2022/11/30/reboot-fest3/](http://www.markaspen.com/2022/11/30/reboot-fest3/)

Photograph by Kibo Productions



## *The Wizard of Oz*

by Alfred Bradley adapted from the novel by L Frank Baum,  
Barnes Community Players at the Kitson Hall, Barnes until 3<sup>rd</sup> December

Even rail disruption and the prospect of England vs Wales football can't dampen the spirits of this joyful stage adaptation of *The Wizard of Oz*, directed with pace and invention by Jane Gough. There are no songs, and few of the iconic lines of dialogue that you might be expecting, but there are buckets of charm and magic to go around.



The audience sit around a thrust stage. Dorothy's "real world" family are depicted on the main stage, while the Oz scenes are played out at floor-level, encouraging greater complicity with the fantastical world in which Dorothy finds herself. The production's illusory elements, from the opening storm to various magic spells, rely heavily on ingenious lighting and sound effects.

Even though the set is minimal, the costumes are simply fabulous. Wardrobe has pulled out the stops for the entire cast, from poppy-wielding Oz residents, to the old favourites. There's Tinman, with wonderfully expressive axe-hand; Lion, the cowardly predator; Scarecrow, blinking widely after wearing the Emerald City's green spectacles; and of course Dorothy herself, a spirited and energetic performance that drives the whole story.

It's a credit to this production that it largely avoids engagement with the famous film adaptation. The costumes are visually distinct, while still evoking those timeless characters. The jagged make-up lines across Tinman's face particularly portray the blighted woodcutter desperate to regain his humanity, in what is quietly the play's darkest detail.

Pitted against the heroes walking the Yellow Brick Road is the Wicked Witch of the West, in gloriously evocative green make-up, and complete with her Cat. The audience soon become involved in booing the witch, even when we were supposed to be feeling sorry for her.

The Wizard, when we do get to meet him, is quite literally the man behind the curtain, demonstrating a remarkable gift for ventriloquism.

This is a lively and engaging production of a family favourite. Audience interaction is encouraged throughout the performance, though not through pantomime's traditional call-and-response. Instead, the audience brandish plastic flowers to become a field of poppies, or become a colony of mice. Younger audience members will adore it.

Read Andrew Lawston's review at [www.markaspen.com/2022/11/30/wizard-oz-bcp](http://www.markaspen.com/2022/11/30/wizard-oz-bcp)

Photograph courtesy of BCP



## *It's A Wonderful Life*

by Jake Heggie, libretto by Gene Scheer

English National Opera at the London Coliseum until 10<sup>th</sup> December

The current trend of staging films seems perplexing, yet it is even harder to turn a film into an opera, where the dialogue will generally have to be rewritten, the words will require a different delivery when sung, and the original music has to be replaced. *It's a Wonderful Life* is ENO's second operatic version of a film after Philip Glass's intriguing *Orphée* last season. There is much to enjoy here, even if I am yet to be convinced that films can be turned into operas. Giles Cadle's sets are extremely inventive, without duplicating the film, whether providing heavenly starscapes or small-town houses.



Nobody needs to worry about Jake Heggie's pleasing and accessible score alienating those who prefer their operas with tunes. Through-composed, it is definitely an opera rather than a musical with delusions of grandeur. It relies heavily on operatic voices, and there are some lovely opportunities for the singers, with long exposed high notes to unfurl and sustain, which they all did beautifully under Nicole Paiement's fluent conducting. The ability of Jennifer France (as Mary Hatch Bailey) to spin out stratospheric sustained high notes is particularly impressive.

Clarence, the wingless second-class angel, becomes Clara. The poised performance of celebrated soprano Danielle de Niese is heavier on charm than vulnerability. The James Stewart part is given to the immensely talented black tenor, Frederick Ballentine, who masters the challenges of this heavy vocal part and has the stage presence to make it completely his own.

As with the film, you begin by resisting the sentimentality and protesting at the naivety, but eventually succumb. *It's A Wonderful Life* is a considerable achievement, and ample evidence of what a disaster it would be to the operatic life of this country if English National Opera ceased to exist. I hope the Arts Council takes note.



Read Patrick Shorrock's review at [www.markaspen.com/2022/11/26/wonderful-eno](http://www.markaspen.com/2022/11/26/wonderful-eno)

Photography by Lloyd Winters



## Jack and the Beanstalk

by Jude Christian and Sonia Jalaly

Lyric Theatre Productions at the Lyric Theatre, Hammersmith until 7<sup>th</sup> January

To make a pantomime perfect, one must first add a good dollop of glitter, a generous helping of goofy gags and finally but most importantly a gigantic amount of gleeful energy!

*Jack and the Beanstalk* has all this and more, with so much colour and sequins. Due to the creative genius of director Nicholai La Barrie, this is a pantomime with great twists and turns, but also a much loved and traditional tale made relevant to today. It is a pantomime that makes you laugh, but also feel a sense of pride.



Jack is a strong-willed young woman who wants to stand up to the 'giant' taxes and the evils



that control Hammersmith, and never was this better presented then by the fantastic Leah St Luce, who acts with such soul that you will find it near impossible not to feel inspired to grab your placard and join her protest! Then there's her best friend Jill, a fairy godmother in training, played by the magical Maddison Bulleyment, whose singing will leave you spellbound.

Jack's younger brother Simon and mother, Dame Trot, played by Finlay McGuigan and Emmanuel Akwafo, both bring broad comedy with Simon's slapstick and Trot's horny humour, questionable parenting, and absolutely outrageous outfits that just keep getting more fabulous in every scene. And of course Daisy, who made one caringly charismatic cow!

However, it is Jodie Jacobs, as Fleshcreep, who absolutely steals the show with her powerful presence and clever comebacks. Her wiry wit and carnal charisma manages to make the often much overdone evil character into a more believable four-dimensional being, whose character arc is interesting to watch.

Leaving *Jack and The Beanstalk* one could hear the audience (young and not so young) singing along to this properly performed, perfectly perky and positive pantomime!



Read Viola Selby's review at [www.markaspen.com/2022/11/26/jack-beanstalk-lyric](http://www.markaspen.com/2022/11/26/jack-beanstalk-lyric)

Photography by Helen Murray

# A Very Different Nativity Play at the Mary Wallace

Lines are being learnt (or not) angels costumes sewn and tears and tantrums quelled as the kids of Flint Street Primary are coaxed, cajoled and corralled into their roles in the forthcoming nativity play.

There are moves to be remembered, songs to be learnt (and occasional little “accidents” to be cleared up) before the play is ready to be performed in front of the little ones’ adoring parents.



But wait - here the children are to be played by adult actors and the result should be well worth the ticket price.



Seeing is believing so book now for THE FLINT STREET NATIVITY at [www.richmondshakespeare.org.uk](http://www.richmondshakespeare.org.uk)

Runs from December 10th to 17th at the Mary Wallace Theatre, the Embankment, Twickenham. TW1 3DU



## Twickenham Art Circle's free advent calendar now available online

Members of Twickenham Art Circle have joined forces for the third year running to produce yet another of their stunning advent calendars.

The calendar can be shared with family and friends, with this year's calendar likely to prove popular with Christmas lovers of all ages.

[Access the advent calendar](#)



# Winter Travel now Black Friday is behind us

By Bruce Lyons



Never mind Black Friday, how's the Travel business coping? This week we had considerable comment from Teresa May addressing delegates in Saudi Arabia at the international meeting of Air Travel companies and their associates, Teresa expressed surprise at the resilience of the industry in getting through the Pandemic with little help from Governments and hot on her heels came news from EasyJet of a £2bn hole in their finances and how they plan to put the books right. It all makes you ponder on how people will embrace travel in these tricky times.

There is some good news however, nearly all Pandemic restrictions, China apart, have disappeared and the glitch in currency rates caused by the Mini Budget that never was, have largely righted themselves. However inflation and the cost of living is influencing trends and one creative move came from easyJet Holidays who have introduced an inflation beater in a 28 night holiday in Sharm El Sheik at an all-inclusive hotel from £600 as one way to beat the energy crisis. Ever been to Sharm EL Sheikh? It is an extremely cosmopolitan resort with amazing Coral to snorkel on in a year-round warm sea. Amazing sea and mountain-scapes and exciting excursions to St Catherine's Monastery high up close to Mount Moses or even Cairo and the Pyramids.

I study the Travel Newsletters and blogs for trends every week and the Travel Trade is upbeat despite the obstacles sent it's way. Trending now are "all inclusive" holidays – as the cost can be predetermined, a favourite destination is the Canary Islands, here you have a wide choice with direct flights to all the Islands, from Heathrow and Gatwick. Tenerife is the favourite with a surprising climate as it is affected on different sides by the Volcano Mount Teide, but Lanzarote is also hugely popular as is Gran Canaria. Of you like it wilder try EL Hierro or La Gomera or even Fuerteventura – popular with windsurfers and para sailing.

There are good options to the Middle East; Sharm, Hurghada, Aqaba, and Tel Aviv. Aqaba flights end late March. Avoiding February School BREAK, you can get great value to these areas which are well known to us at Crusader Travel and we can plan diverse itineraries be City, Culture, History, The Holy Land, perhaps Crusader Castles, the Dead Sea and Masada or even down to Eilat on the Red Sea- for a long time our back yard so to speak, so drop by and you may get an amazing surprise.

Crusader Travel, 58 Church Street, Twickenham, TW1 3NR

[www.crusadertravel.com](http://www.crusadertravel.com)





# TRAVELLER'S TALES 136

## A CORNER OF LONDON

Doug Goodman visits Hyde Park Corner

Marooned in the middle of one of London's busiest road junctions is Wellington Arch on Hyde Park Corner. With a few hours to spare in central London and a new membership of English Heritage I decided to visit the museum inside Wellington Arch. Designed by Decimus Burton in 1826 and planned by George V as a triumphal arch to commemorate the various victories over Napoleon, it and Marble Arch were originally entrances to Buckingham Palace. Later dedicated to the famous military leader and statesman the monument became known as The Wellington Arch. Its location was moved in 1882 to ease traffic congestion. Topped by the largest bronze statue in Europe – the Angel of Peace - it soon became one of the capital's most iconic buildings. London's smallest police station was housed within the arch until 1992 when the museum on four floors was established. The story of the design and construction is explained while the second floor is devoted to the history of the Royal Regiment of Artillery in World War 1 commemorating the nearly 50,000 men who died in the war. Nearby is the huge Royal Artillery monument. From the top of the arch you get splendid views over Buckingham Palace gardens, Green Park and Apsley House. Time your visit right and you'll witness the Household Cavalry passing through the arch on the way to and from Horse Guards Parade. The only vehicles allowed to drive through Wellington Arch are those carrying members of the royal family.



Wellington Arch



Wellington Statue and Arch



Wellington Statue and Apsley

### NUMBER ONE

If house numbers could be bought like personalised car number plates then number one London would be worth a fortune. Apsley House was given the popular name of number one London by travellers heading towards the city from the toll gate at Knightsbridge on seeing the first house. Apsley House is officially at 149 Piccadilly. The magnificent aristocratic townhouse was designed by Robert Adam between 1771 and 1778 for Lord Apsley and redesigned for Wellington in 1819. The first Duke was renowned for his victories in battle with the French: Waterloo in 1815 being the most famous. As well as a military leader Wellington was a statesman becoming Prime Minister in 1828. The lavish interior of Apsley House provided the perfect location for state occasions where an annual banquet was held from 1820 until Wellington's death in 1852 to commemorate his victory over Napoleon. In 2015 The 9th Duke and the Duchess of Wellington, who retain part of the house as their London home, held a

banquet to commemorate the 200th anniversary of the Battle of Waterloo.



Police Station



Palace Gardens



Horse Mounting Block



The Duke of Wellington

Apsley House was given to the nation in 1947 and came under the care of English Heritage. Within the house, referred to as the Wellington Museum, visitors can see the dining room set for a banquet, memorabilia from the life and career of the duke and a priceless collection of paintings. In the apartments on the first floor you can see works by Velazquez, Goya, Titian, Rubens and Breughel. Portraits of the first duke dominate the display of the great masters. On Hyde Park Corner, once called Wellington Place, stands the imposing statue of Wellington on his favourite horse Copenhagen. Made of bronze from captured French cannon it was unveiled in 1822.



Apsley House



Apsley house Waterloo Room



The Duke of Wellington

In London you can see other reminders of Wellington. Walk towards the Duke of York's column from Piccadilly Circus down Regent Street to Waterloo Place where you'll find a mounting block. This was built at the request of Wellington to help him mount his horse after making visits nearby. He died on 14th September 1852 age 83 at Walmer Castle and was given a state funeral. Ten thousand soldiers from every regiment in the British army, headed by Prince Albert accompanied the huge carriage containing his body to St. Paul's Cathedral. There, the great hero was laid to rest alongside Nelson.

Info: Admission to Wellington Arch is £6.60 for non-members of English Heritage. Admission to Apsley House is £12.80. A combined ticket costs £16.00. Concessions are available.

# WIZ Tales: SYRIA

Teresa Read



The Syrian Arab Republic is in the Middle East, bordered by Lebanon, Israel, Jordan, Iraq, Turkey and the Mediterranean Sea. Damascus is the capital city.

This week cholera vaccine from UNICEF and the Gavi Vaccine Alliance arrived in Damascus to help stem the tide of an outbreak of cholera declared on 10<sup>th</sup> September 2022.

Cholera has been known in the area since ancient times and was mentioned by Hippocrates in the 4<sup>th</sup> century BC; there have been seven cholera pandemics since 1817.



*The Old City of Damascus*

Syria was one of the early centers of agricultural development, a settlement founded by the Euphrates River 13,500 years ago. Damascus is among the oldest cities in the world, other ancient cities include Aleppo and Palmyra; the ancient city of Ugarit excavated in 1929 is said to have been where the first alphabet originated.



*Mount Lebanon*



*Excavated City of Ebla*



*Halabiya, Zenobia, Syria*



*Ruins, Hama*

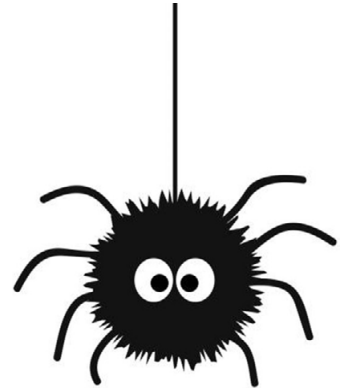
More photographs of Syria: <https://worldinfozone.com/gallery.php?country=Syria>

# WHY ARE WE ALL SO DAMN SCARED OF SPIDERS ?!

By Deep Patel

We have all been there...Sunday afternoon...cold and rainy outside...laying on the sofa watching a Christmas film...life couldn't be better...and then...from the corner of your eye...you see him...slender...dark...agile and fast...no I am not talking about the man of your dreams...I am talking about none other than our good friend...the British house spider...sound familiar? Well you are not alone...

Before you reach for your slipper to clout it one and be done with it, spare a thought for just how amazing these little creatures are...if you thought "a dog is man's best friend", think again...it's these little critters...spider webbing is currently being structurally examined to replicate intricate weaves to create parachutes and bullet-proof vests for human use (no I am not joking) and it is a fact that if you had spider webbing around the thickness of a pencil, it would easily stop a car in motion as it is 5 times stronger than a strand of steel of the same thickness (again, no joke)...our best friend is therefore not a dog...it is from now onwards the common house spider...they never actually harm us and instead stay hidden (most of the time) spinning their funnel shaped webs (not like the normal webs we see) to catch little ticks that may cause us allergies...so they are literally helping us to keep our homes healthy and clean...like a personal cleaner that never asks for wages...what more could you ask? Feel bad about grabbing your slipper now don't you...(if you still don't feel bad then you are a monster and will have bad karma...just saying).



So now back to the focus of this article...if 99.9% of the spiders in Twickenham are COMPLETELY harmless to us humans, then why the heck are humans still so damn terrified of them?...Well the roots go back to the good old brain and our upbringing...from a young age we have been conditioned by films, stories, TV and festivals like Halloween to see spiders as "bad" or "dangerous" or even evil...so we grow up with an irrational fear of them and end up s\*\*t scared of them...never mind the fact that we tower over them as giants a million times bigger than them, we still think that they are gonna "get us"?! What are we like?! I mean really?!? Never mind...the past is in the past...let's make a positive change today and no longer kill off our fellow spiders with a new found respect for them and in the interest of good karma for ourselves...

So how can we stop being so terrified of the little gits I hear you ask? The solution is really quite simple...STOP TELLING KIDS EVERY LITTLE INSECT IS GOING TO ATTACK THEM! (obviously if you are reading this in a tropical country then you should also teach children to act with caution around certain species but also still respect them).

If we familiarize our kids with them and teach them that insects are also living beings with families and feelings then our kids will grow up with a level of empathy that even Mother Teresa would be proud of...and ultimately this would lead to a kinder community and loving world...imagine...no hate...no wars...ok I am not saying by any means that if we learn not to kill spiders then all the wars will stop...but it is definitely a step in the right direction for sure...more compassion (yes even towards the little things) creates more love...isn't that something every parent and human should be encouraging right now? Learn that we are NOT the only inhabitants of this precious world and that we should respectfully learn to live and let live...(then you will definitely have good karma).

As readers many know, I am a great enthusiast of good karma and am asking that we all resort to kinder ways to stop spiders in our homes going forward...if you have to put a house spider outside, remember they CANNOT live in the cold of our winters (hence they are "house spiders") so always put them near a garage or she where they can live happily away from you but in peace.

If you have rodent issues, consider live capture traps where you can catch the rodents alive and release them in woodland or parkland areas far from homes. Try electronic high-frequency sound deterrents (check online for ones with good reviews and ones that are safe for your pets if you have any). Put empty jam jar lids filled with white vinegar all around areas where you don't want them to stop them without harming them (they HATE the smell of white vinegar). This also works for foxes, squirrels, mice and rabbits!...you will accrue significant good karma...you never know when you may need it back...Like I always say, even picking up a slug off a pavement with a leaf and moving it over a wall counts as a good deed... choosing a kind way to stop ants (like talcum powder around where they come but not on them) counts as a good deed.

Avoid sweeping/washing the garden patio too often to help save countless tiny almost invisible little lives that live there (particularly under large pots in the garden, hence I say gently lift the pots if you need to move them rather than dragging them to avoid crushing little lives).

So that just about wraps up another article from me...the key to our own happiness lies in the happiness of other life forms...until the next time...have a lovely week and look after the smaller life forms and the universe will look after you.

For further tips, check out my Facebook page "Kind World". As always...Peace, love and good karma to all Xx



# Politics students have fun at 'Battle of Ideas Festival'

In October, Richmond upon Thames College's A Level Government and Politics students attended the 'Battle of Ideas Festival' at Church House, Westminster.



The Battle of Ideas Festival is a two-day event in which academics, commentators, artists and the audience come together to debate in a public forum style an assortment of topics, such as cancel culture, modern parenting, policing, biometrics, immigration and many more.

The festival takes place in London and Buxton for three days in the UK and other European cities including Warsaw, Berlin, Stockholm and Athens.

Student, Kiera Napier attended one of the festival days at Church House, learning interesting political knowledge, as well as challenging some of her existing beliefs about the police, culture, health, and American political systems.

Kiera attended four debates, 'Who do the police serve?' 'Is cancel culture killing the arts?' 'Can America survive the cultural wars' and 'Too Fat – Too thin: Are we obsessed with calories?'

Kiera discusses her time at the festival, saying, "At the Battle of Ideas, they believed that the more discussions you have, the more it will impact on how the future is formed. I really cherished the different perspectives I encountered and where I can now incorporate them into my own political opinions.

"This was a fantastic experience in which I discovered many diverse types of opinions. Anyone interested in politics or debate should participate in this festival. I am grateful to have attended an environment where free expression is encouraged."

Learn more about studying Government and Politics at Richmond upon Thames College, [here](#)



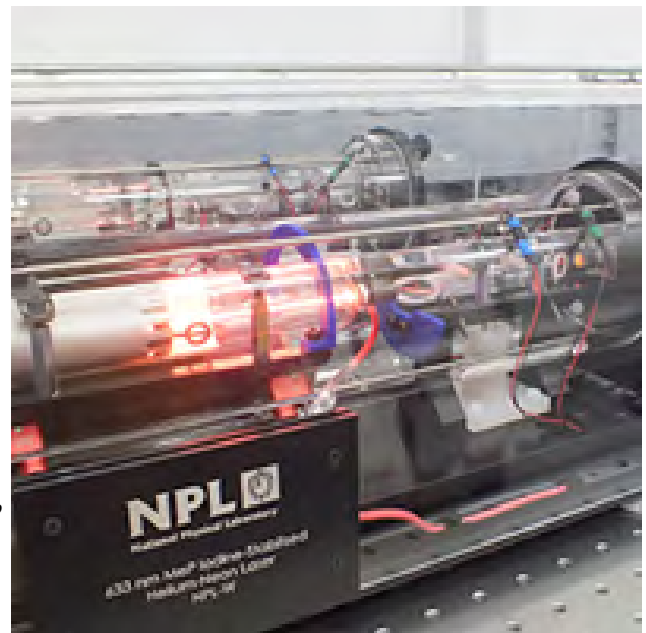
**Richmond upon  
Thames College**

# NPL and BIPM lead the drive for the digitalisation of the SI

Joint publication with BIPM Director on digitalising SI traceability at the highest level

In an [article](#), recently published in IOP's *Metrologia*, scientists from NPL's dimensional metrology group and BIPM proposed a new digital framework for realising the SI, specifically the metre, the unit of length. It describes how the realisation of the metre, most often in the form of a stabilised laser wavelength, can be part of digitalisation efforts currently underway at National Metrology Institutes (NMIs) and BIPM. All length measurements worldwide from the scale of atoms to the largest engineering projects, are traceable to such realisations - without them, there would be disunity and disagreement across the world, with nobody knowing how big a metre is.

With BIPM and other NMIs currently focusing on the digitalisation of the international system of units - the 'SI', the research proposed an XML schema, which, together with online access to a database of frequencies and specifications hosted by the BIPM, could allow users to obtain digital, machine-readable data, to assure the automated, correct operation of the lasers. Key extracts from the data can then be included in digital calibration certificates to demonstrate to accreditation bodies that laser-based measuring systems that are calibrated using these lasers, are truly, and digitally, traceable to the SI.



The transition to digitalise the SI will ensure that it remains robust into the future, ready to accommodate future advances in science and technology as well as reducing the burden of having to send, receive, and process all of the calibration certificates which are currently in analogue (paper) format.

NPL is building updated metre realisation lasers which incorporate digital control using a microcomputer which will be able to automatically link to the BIPM server and download the digital metre realisation data during calibration of a customer's laser. Moreover, the approach proposed in the article could be extended to other SI units, bringing similar efficiencies to their use.

**Principal Research Scientist Andrew Lewis said:** *“For too long, this highly critical and very detailed information, used by all the national laboratories to realise the metre, has only been available in analogue format which has needed a human to interpret and to correctly transcribe every time it is updated. Now this is to be digitalised; it will lead to fewer mistakes, more automated operation, and have the benefit of providing a digital focus at the top of the digital traceability chain.”*



# Time running out to get free Woodland Trust trees for your school and community group in the south east of England

**The Woodland Trust is urging schools and community groups across the south east of England to get their free tree-pack applications in quickly with just over a month left until the spring delivery closes.**

Applications for spring, for delivery in March 2023, are currently open, but only until 11 January.

The last round of the ever-popular free tree-packs scheme was the Woodland Trust's biggest-ever single send-out, with 4,625 organisations across the UK taking advantage of the scheme.

A total of 643 schools and community groups in London, Greater London, Kent, Surrey and Sussex took delivery of their trees from the end of October to 11 November.

**In the south east of England, 88,155 trees were sent out to 643 organisations:**

- 16,380 Trees to 168 organisations in London
- 9,690 trees to 87 organisations in Greater London
- 26,535 trees to 157 organisations Kent
- 14,070 trees to 101 organisations in Surrey
- 21,480 trees to 130 organisations in Sussex

The figures for the south east of England were part of a bumper autumn delivery which saw 740,970 saplings finding homes the length and breadth of the UK, bringing the annual total to a record-breaking 1.3m trees for 2022.

Woodland Trust senior project lead Vicki Baddeley said there is no time like the present to sign up and take advantage of the scheme.

*"With Christmas looming and National Tree Week upon us, now really is a good time to get those applications in and ensure you don't miss out," she added.*

*"We still have lots of trees available but with schools breaking up before you know it, and the hectic holiday period around the corner, it makes sense to get organised nice and early and avoid a last-minute rush in early January.*

*"Planting trees is such a simple action, but the collective impact can make a huge difference. It's a great way for schoolchildren and community groups to learn about nature and the environment and, at the same time, embrace a "Green Christmas".*

*"Planting trees has so many benefits, from combatting the effects of climate change, helping support wildlife, to greening up local spaces and boosting well-being.*

*"The desire to plant trees is growing all the time and I fully expect demand to reflect that in the coming weeks, so I would advise any interested groups to apply sooner rather than later.*

*"The application process to secure your saplings is quite straightforward, just visit <https://www.woodlandtrust.org.uk/plant-trees/schools-and-communities/> to get started."*

The Trust's tree packs have been generously funded by lead partners: Sainsbury's, Lloyds Bank, OVO Energy, Bank of Scotland and Sofology.

Baddeley added: *"As ever, the support and generosity of our funders is invaluable and we simply couldn't do this without them.*

*"The help each and every one of them provides is hugely appreciated and helps to ensure we can provide and deliver our saplings in such huge numbers."*

**The Woodland Trust's autumn delivery:**

- England: 615,720 trees to 3,982 schools and community groups
- Scotland: 77,940 trees to 428 schools and community groups
- Wales: 47,310 trees to 215 schools and community groups



**WOODLAND  
TRUST**

# Share your thoughts in our latest fan survey

## Be in with a chance of winning a signed Brentford shirt by providing feedback in our latest fan survey

Written by Brentford Football Club

**Brentford fans are invited to provide feedback on their matchday experience and interactions with the Club in our mid-season survey launching today.**

**The [fan survey](#) is an important opportunity for us to monitor and measure our performance off the field, and make improvements where needed.**

To give our fans the best experience, we're now running the survey twice a year, as well as two shorter surveys.

We're seeking the opinions of our fans in a range of areas, including experiences at matches, our retail offering and community work. Whether you've attended a match or not, your views are important to us, and we want to hear from you.

The survey takes approximately ten minutes to complete, and responses will be anonymous. Fans who completed the survey will be entered into a prize draw to win a 2022/23 Brentford shirt signed by the men's First Team squad.

Brentford's fan and community relations director, Sally Stephens, said: "Feedback from our fans on how we're doing as a Club is so important to us and we really appreciate the time taken by supporters to share their views.

"We hope that having regular fan surveys will allow us to hear from as many Bees fans as possible and help to focus our efforts on any improvements that will make the biggest difference for our supporters."

In June this year, we ran our end-of-season survey. The feedback we receive from these surveys helps us to identify issues we need to focus on. It also allows us to review and react to how opinions may change throughout the season.

Some areas of improvement identified from the last survey results included the range and value for money of our matchday food and beverage and the need to increase awareness of how to report abuse on matchdays.

Off the back of this, we have reviewed our early bird discounts, our bundle offers, brought in a new pop-up curry kiosk in the West Upper and introduced the Too Good To Go service (details below).

We are also improving the signage within the stadium highlighting the reporting processes if any instances of abuse happen at our games.

**Our survey closes on 16 December at midday.** Be sure to share your views before then.

[Complete our mid-season survey.](#)





# HEALTH officials are dealing with fresh cases of diphtheria at the Manston migrant processing centre in Kent

The new cases were discovered this week among the more than two thousand Channel migrants who have arrived on small boats in recent days. Those picked up in the Channel are taken to Dover and Manston for processing, which includes health checks.

GB News has obtained exclusive still images from inside Manston, revealing some of the conditions those at the camp have been living in. The pictures show hundreds of blue bags containing the clothing and other belongings of those who have arrived.

As part of the processing centre's public health protocols, the belongings are removed and disposed of as hazardous waste. The images also show the dormitories where migrants are housed, with sleeping mats next to each other on the floor.



GB News understands that at least 6 migrants have tested positive for diphtheria and are being isolated in a separate area of the camp. At one point this week, more than 800 people were being housed inside the camp as they were being processed.

In October, a surge in small boat crossings led to a bottleneck at Manston, with more than 4,000 people living in the camp, some for several weeks. Manston is only meant to support a maximum of 1,500 migrants for no more than 24 hours as they are being processed and then passed on to interim accommodation.

During the October surge, authorities dealt with 50 confirmed cases of diphtheria. Two migrants had to be hospitalised, and one who later died was confirmed as having contracted diphtheria.

A Home Office spokesperson would not comment on the reports of fresh cases of the potentially deadly disease.

But in a statement they said: *"We have followed the guidance provided by the UK Health Security Agency at all times and a vaccination programme was set up by 15 November within days of this advice being provided to the Home Office.*

*"We take both the welfare of those in our care and our wider public health responsibilities extremely seriously.*

*"Full procedures, including with antibiotics and isolation processes have been followed in accordance with UKHSA advice."*

Official sources have told [GB News](#) that health authorities believe those testing positive for diphtheria contracted the disease before they crossed the Channel.

More than 2000 people have arrived in small boats so far this week, after a fortnight of bad weather in the Channel prevented crossings.

# MoD's Equipment Plan 2022 to 2032

The Ministry of Defence's assessment that its 2022-2032 Equipment Plan is affordable continues to be based on optimistic assumptions, and does not fully reflect the impact of growing pressures on costs, according to the National Audit Office (NAO).

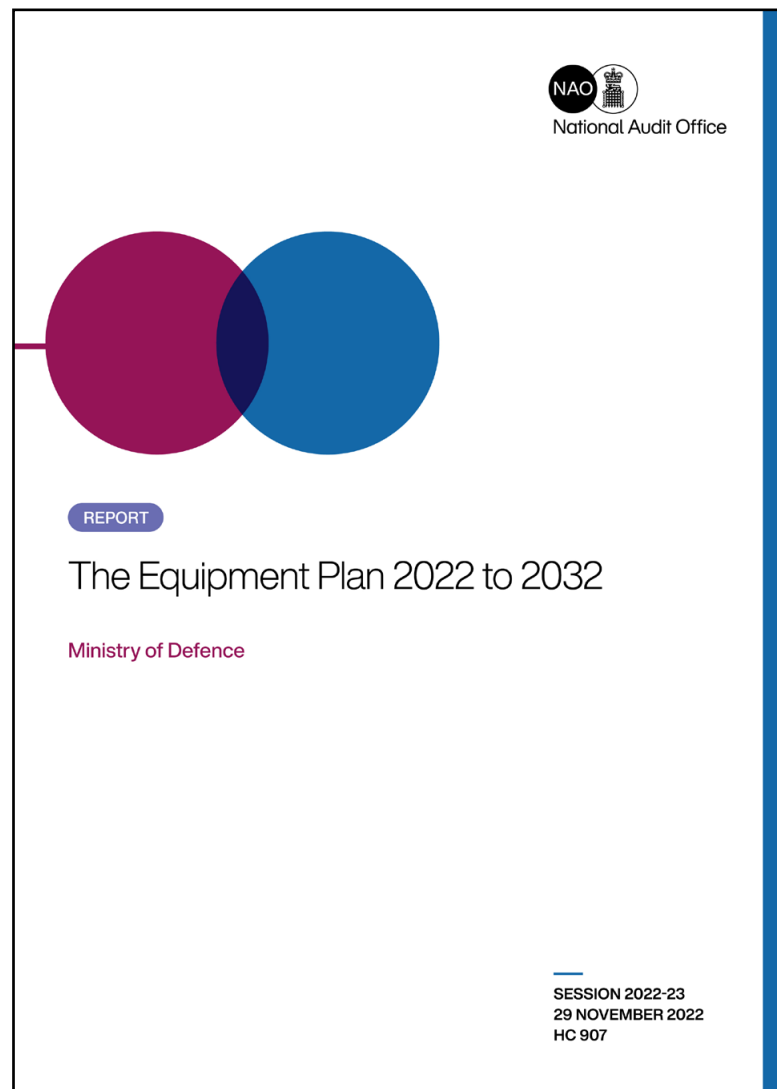
The Ministry of Defence (MoD) publishes the Equipment Plan (the Plan) each year, setting out its planned investment on equipment procurement and support projects over the next decade. The latest Plan covers the period from 2022 to 2032, and the MoD has allocated a budget of £242 billion, comprising forecast costs for some 1,800 projects at different stages of development.

The MoD judges that the 2022-2032 Plan is affordable, with the £242 billion budget exceeding forecast costs by £2.6 billion, a surplus of 1%. The MoD has improved its assessment of cost pressures, strengthening its adjustment of cost forecasts and establishing a more reliable methodology to compare affordability with previous years. The MoD recognises that pressures on costs are growing, but believes these are manageable within the current Plan.

The NAO found that MoD's assessment continues to be based on optimistic assumptions that it will achieve £13.5 billion of efficiency savings over ten years. The Top Level Budgets (TLBs) are still developing plans to deliver a quarter of these efficiencies (£3.4 billion). In addition to these savings, TLBs need to find cost reductions totalling £3.7 billion, but do not yet have credible plans to achieve £1.6 billion of these.

Project costs could also increase by more than the Plan assumes. The MoD's Cost Assurance and Analysis Service assessed projects making up 53% of the Plan's costs this year. It concluded that these projects could cost £5.2 billion more than stated in the Plan, including £1.6 billion for the Dreadnought programme (for which HM Treasury has a separate contingency). The MoD is facing increasing risks in delivering projects to budget and schedule. It has estimated that there will be a deficit of £7.3 billion if all risks materialise. The NAO considers that this does not fully reflect all the uncertainties the MoD is facing.

The MoD has limited flexibility to absorb any cost increases on equipment projects, or across other budgets, particularly in the short-term. The Plan has a deficit of £2.6 billion across the



first seven years, and a surplus of £5.2 billion in the final three years. It includes a contingency of £4.3 billion, which the MoD can use to fund new capabilities or to help address unexpected pressures, equivalent to 2% of the Plan's overall budget. It has also set aside an additional £4.4 billion from 2025-26 to exploit its investment in research and development. However, the NAO found that it will be challenging for the MoD to manage affordability pressures, and to deliver equipment projects as planned.

The MoD has a good understanding of operational capability risks and continually reassesses which equipment projects to fund. It cannot currently afford to develop all the capabilities set out in the 2021 Integrated Review of Security, Defence, Development and Foreign Policy. The MoD may need to replace existing projects, reduce their scope or accept later delivery, if it is to be able to develop the new military capabilities within existing budget limits.

The MoD has not yet reflected the impact of growing external cost pressures, such as rising inflation and the impact of the conflict in Ukraine, on the Plan's affordability. The MoD estimated, based on March 2022 forecasts, that project costs could be up to £2.1 billion higher because of inflationary pressures, but this is not reflected in the assessment that the Plan is affordable over ten years. Inflation has increased further since the March forecast, meaning that the affordability position reported in the Plan has already been overtaken by events.

The MoD is quantifying these external pressures, and intends to reflect them in the next planning round, along with future uncertainties. It will also assess the implications of the Ukraine conflict, for example on what capabilities, stockpiles and levels of resilience are needed to respond to changing threats.

The NAO recommends that MoD assesses whether its financial planning processes provide the level of responsiveness and flexibility that it now requires, given the rapidly changing context in which it is operating. This includes assessing how to provide a more timely assessment of affordability, and how to capture uncertainty more realistically. It should also ensure it has sufficient flexibility to adapt its equipment programme to respond to changing threats.

Gareth Davies, the head of the NAO, said:

“The Ministry of Defence has made improvements to how it assesses affordability, but its view that the 2022-2032 Plan is affordable is still based on optimistic assumptions. Pressures on costs continue to grow, and the MoD will need to make difficult decisions on priorities to live within its means, and retain the flexibility needed to respond promptly to the changing pressures that it faces.”

Click here for the [Full Report](#) and click here for the [PAC Chair's statement](#).



National Audit Office

# WHO recommends new name for monkeypox disease

Following a series of consultations with global experts, WHO will begin using a new preferred term “mpox” as a synonym for monkeypox. Both names will be used simultaneously for one year while “monkeypox” is phased out.

When the outbreak of monkeypox expanded earlier this year, racist and stigmatizing language online, in other settings and in some communities was observed and reported to WHO. In several meetings, public and private, a number of individuals and countries raised concerns and asked WHO to propose a way forward to change the name.

Assigning names to new and, very exceptionally, to existing diseases is the responsibility of WHO under the International Classification of Diseases (ICD) and the WHO Family of International Health Related Classifications through a consultative process which includes WHO Member States.

WHO, in accordance with the ICD update process, held consultations to gather views from a range of experts, as well as countries and the general public, who were invited to submit suggestions for new names. Based on these consultations, and further discussions with WHO’s Director-General Dr Tedros Adhanom Ghebreyesus, WHO recommends the following:

- Adoption of the new synonym mpox in English for the disease.
- Mpox will become a preferred term, replacing monkeypox, after a transition period of one year. This serves to mitigate the concerns raised by experts about confusion caused by a name change in the midst of a global outbreak. It also gives time to complete the ICD update process and to update WHO publications.
- The synonym mpox will be included in the ICD-10 online in the coming days. It will be a part of the official 2023 release of ICD-11, which is the current global standard for health data, clinical documentation and statistical aggregation.
- The term “monkeypox” will remain a searchable term in ICD, to match historic information.

Considerations for the recommendations included rationale, scientific appropriateness, extent of current usage, pronounceability, usability in different languages, absence of geographical or zoological references, and the ease of retrieval of historical scientific information.

Usually, the ICD updating process can take up to several years. In this case, the process was accelerated, though following the standard steps.

Various advisory bodies were heard during the consultation process, including experts from the medical and scientific and classification and statistics advisory committees which constituted of representatives from government authorities of 45 different countries.

The issue of the use of the new name in different languages was extensively discussed. The preferred term mpox can be used in other languages. If additional naming issues arise, these will be addressed via the same mechanism. Translations are usually discussed in formal collaboration with relevant government authorities and the related scientific societies.

WHO will adopt the term mpox in its communications, and encourages others to follow these recommendations, to minimize any ongoing negative impact of the current name and from adoption of the new name.



# WHO calls on the global community to equalize the HIV response

On 1 December, World AIDS Day 2022, the World Health Organization (WHO) is calling on global leaders and citizens to boldly recognize and address the inequalities that are holding back progress in attaining the global goal to end AIDS by 2030.

WHO is joining global partners and communities in commemorating World AIDS Day 2022 under the theme “Equalize” – a message highlighting the need to ensure that essential HIV services reach those who are most at risk and in need, particularly children living with HIV, key populations to HIV and their partners.

“With global solidarity and bold leadership, we can make sure everyone receives the care they need,” said Dr Tedros Adhanom Ghebreyesus, WHO Director-General. “World AIDS Day is an opportunity to re-affirm and refocus on our shared commitment to end AIDS as a public health threat by 2030”.

HIV remains a major public health issue that affects millions of people worldwide. But our response is at risk of falling behind.

Of the 38 million people living with HIV, 5.9 million people who know they have HIV are not receiving treatment;

- A further 4 million people living with HIV have not yet been diagnosed;
- While 76% of adults overall were receiving antiretroviral treatment that help them lead normal and healthy lives, only 52% of children living with HIV were accessing this treatment globally in 2021;
- 70% of new HIV infections are among people who are marginalized and often criminalized;
- While transmission has declined overall in Africa, there has been no significant decline among men who have sex with men – a key population group -- in the past 10 years.

## Overlapping epidemics of mpox and HIV

Available WHO data show that among people confirmed to have mpox, a high number—52% - were people living with HIV. Global data reported to WHO suggest that people living with mpox with untreated HIV appear to be at risk for more severe disease than people without HIV.

The current response to mpox shows that transmission can move quickly in sexual networks and within marginalized populations. But it can also be prevented with community-led responses and open attitudes to address stigma, and health and wellbeing can be improved and lives can be saved.

## Delivering for key populations of HIV

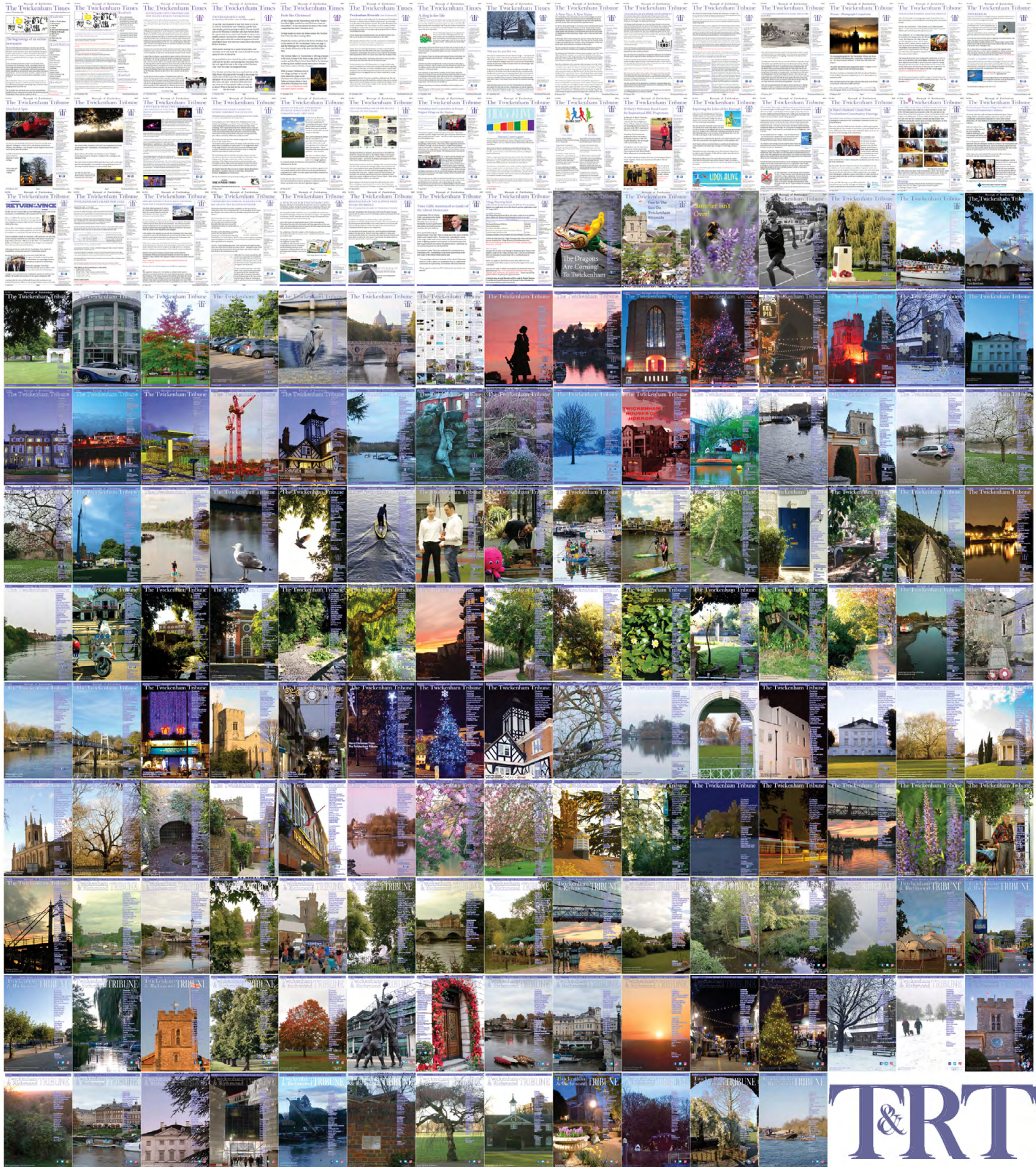
This World AIDS Day, WHO recommends a renewed focus to implement WHO’s 2022 guidance to reach the HIV and related health needs of [key populations](#) and [children](#).

“People must not be denied HIV services no matter who they are or where they live, if we are to achieve health for all,” said Dr Meg Doherty, WHO Director of the HIV, Hepatitis and STI programmes. “In order to end AIDS, we need to end new infections among children, end lack of treatment access to them, and end structural barriers and stigma and discrimination towards key populations in every country as soon as possible.”

With only eight years left before the 2030 goal of ending AIDS as a global health threat, WHO calls for global solidarity and bold leadership from all sectors to ensure we get back on track to ending AIDS and, with that, end new syndemics, such as the recent mpox global outbreak.



# 317 editions of the **Twickenham & Richmond Tribune** online - Lots to read: News, Reviews, History, Sports and On-going Sagas in the Borough of Richmond upon Thames



Half Page

Quarter Page  
Landscape

Quarter Page Portrait

Eighth Page

Eighth Page  
Landscape

Example advert sizes shown above

Thousands read The Twickenham & Richmond Tribune

If you are reading this you could be advertising your business with  
The Twickenham & Richmond Tribune. Community rates are  
available

Contact: [advertise@TwickenhamTribune.com](mailto:advertise@TwickenhamTribune.com)

View ad details at [www.TwickenhamTribune.com/advertise](http://www.TwickenhamTribune.com/advertise)

**Contact**

[contact@TwickenhamTribune.com](mailto:contact@TwickenhamTribune.com)  
[letters@TwickenhamTribune.com](mailto:letters@TwickenhamTribune.com)  
[advertise@TwickenhamTribune.com](mailto:advertise@TwickenhamTribune.com)



**Published by:**

Twickenham & Richmond Tribune (in association with World InfoZone Limited)

Registered in England & Wales

Reg No 10549345

The Twickenham Tribune is registered with the ICO under the Data Protection Act, Reg No ZA224725

©Twickenham & Richmond Tribune. All rights reserved. No part of this publication may be used or reproduced without the permission of Twickenham & Richmond Tribune. While we take reasonable efforts, this online newspaper cannot be held responsible for the accuracy or reliability of information. The views and opinions in these pages do not necessarily represent those of The Twickenham & Richmond Tribune.

[Terms & Conditions](#)